

DOSSIER

-

OPERATION

REAMENAGEMENT DU REZ DE CHAUSSEE DE LA BU LSH
52 Av. Paul Alduy
Perpignan

MAÎTRE D'OUVRAGE

-

MAÎTRE D'OEUVRE

ATELIER FOISSIER
Laurie Anne FOISSIER, Architecte
04 30 46 71 69
l.foissier@atelierfoissier.fr



BET

ENR Conseil
BET Réseaux

PHASE

DCE

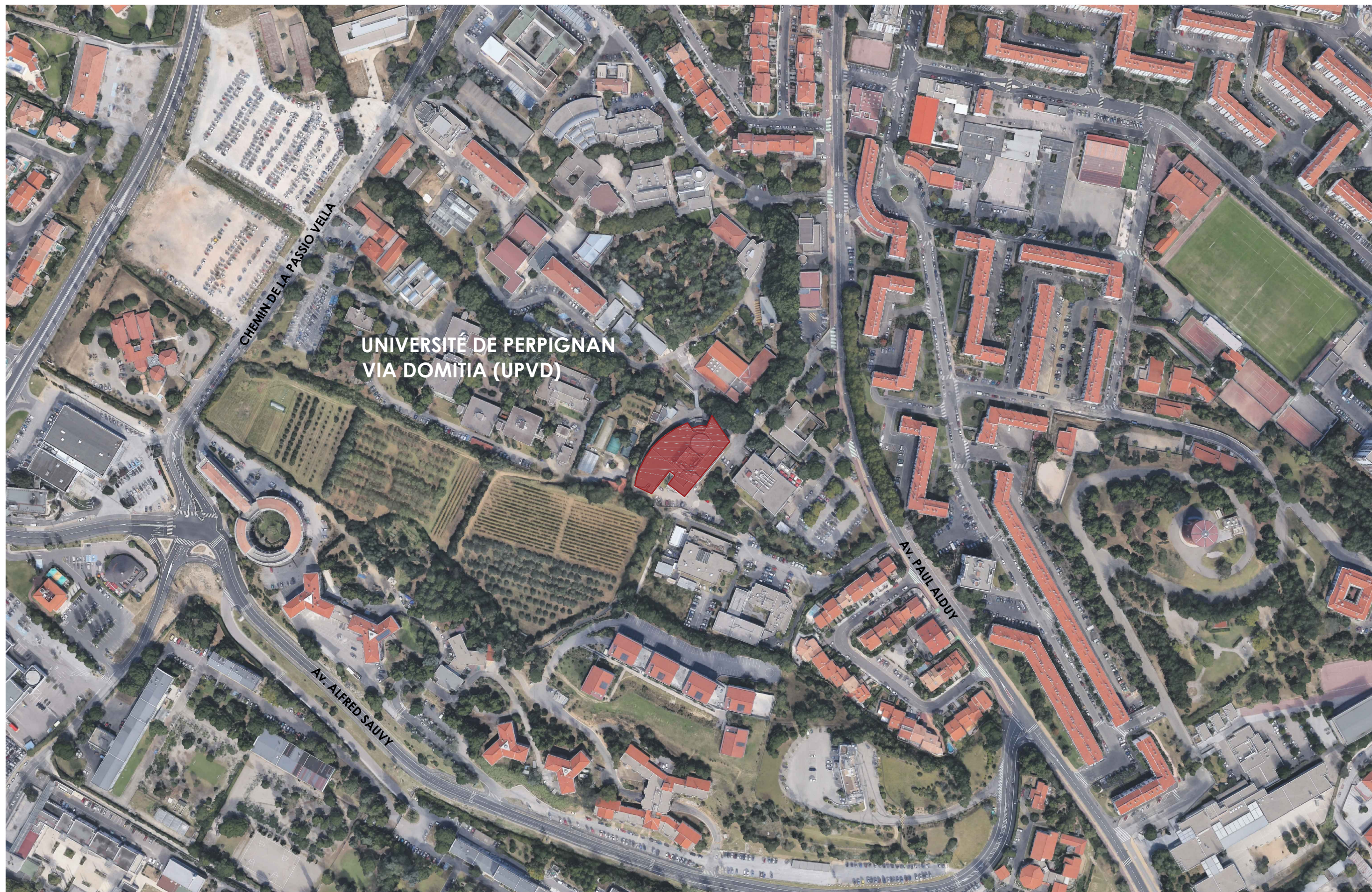
LISTE DES PIECES

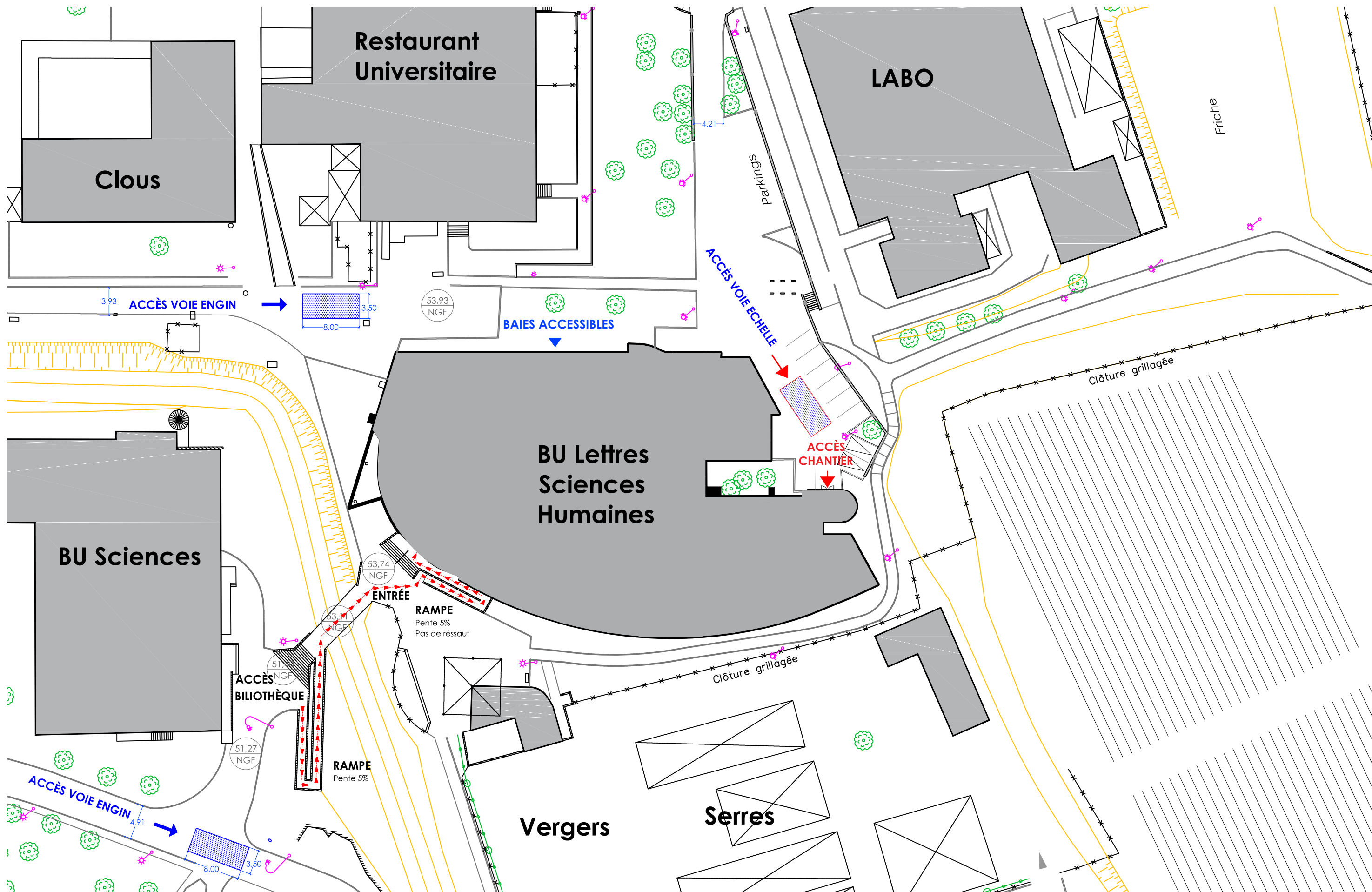
PIECES GRAPHIQUES

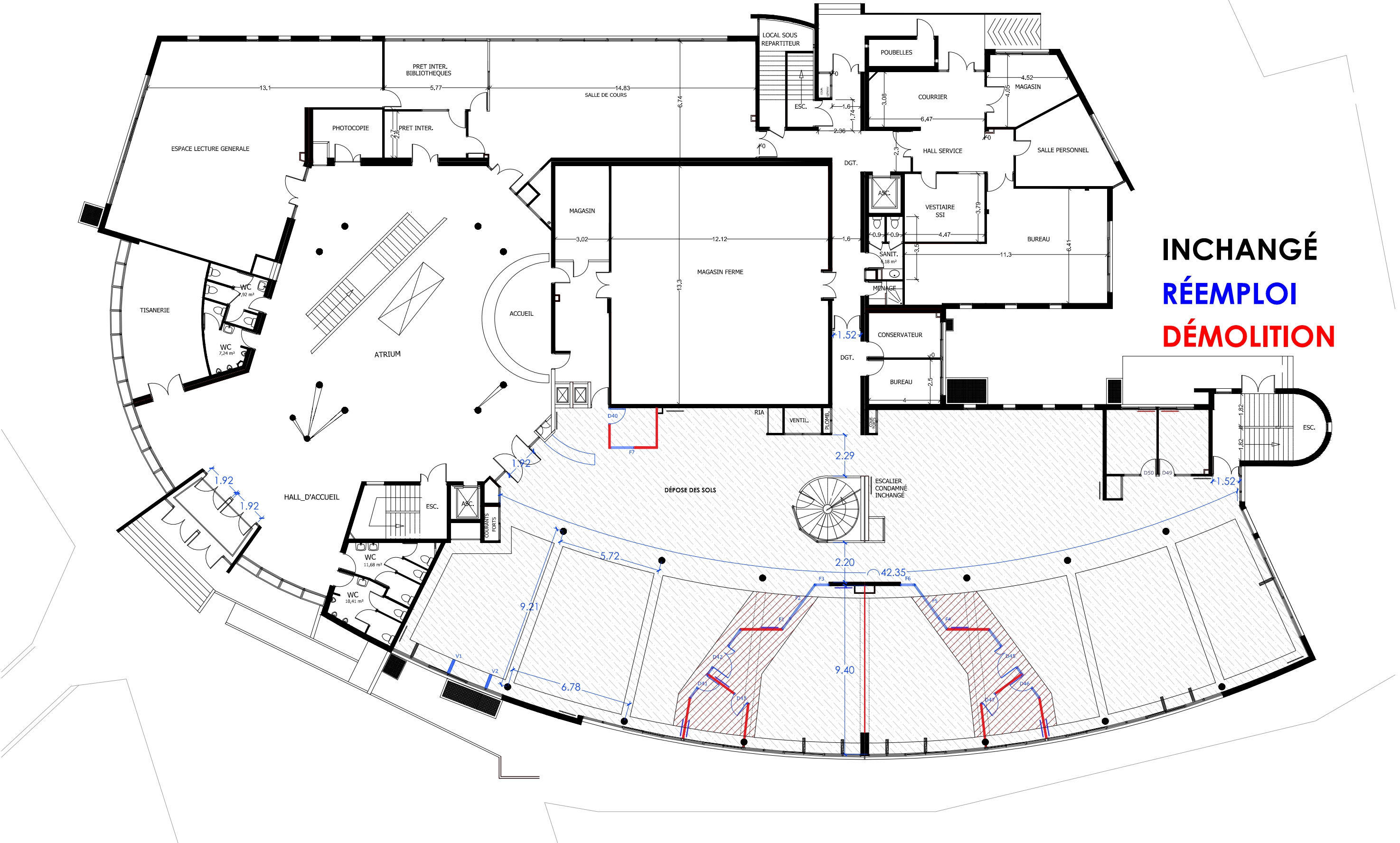
Plan de situation	-
Plan masse EDL	1/500°
Rez-de-chaussée EDL	1/200°
Rez-de-chaussée Démolitions	1/200°
Rez-de-chaussée Sols et Plafonds	1/200°
Rez-de-chaussée Sols	1/175°
Rez-de-chaussée Plafonds	1/175°
Plan RDC projet 1	1/200°
Plan RDC projet 2	1/150°
Plan RDC projet Zooms	1/75°
Menuiseries intérieures	1/75°
Banque d'accueil	1/20°
Coupe A-A'	1/50°
Coupe générale	1/150°
Élévations	1/150°
Élévations	1/75°
Perspectives	-

INDICE / DATE

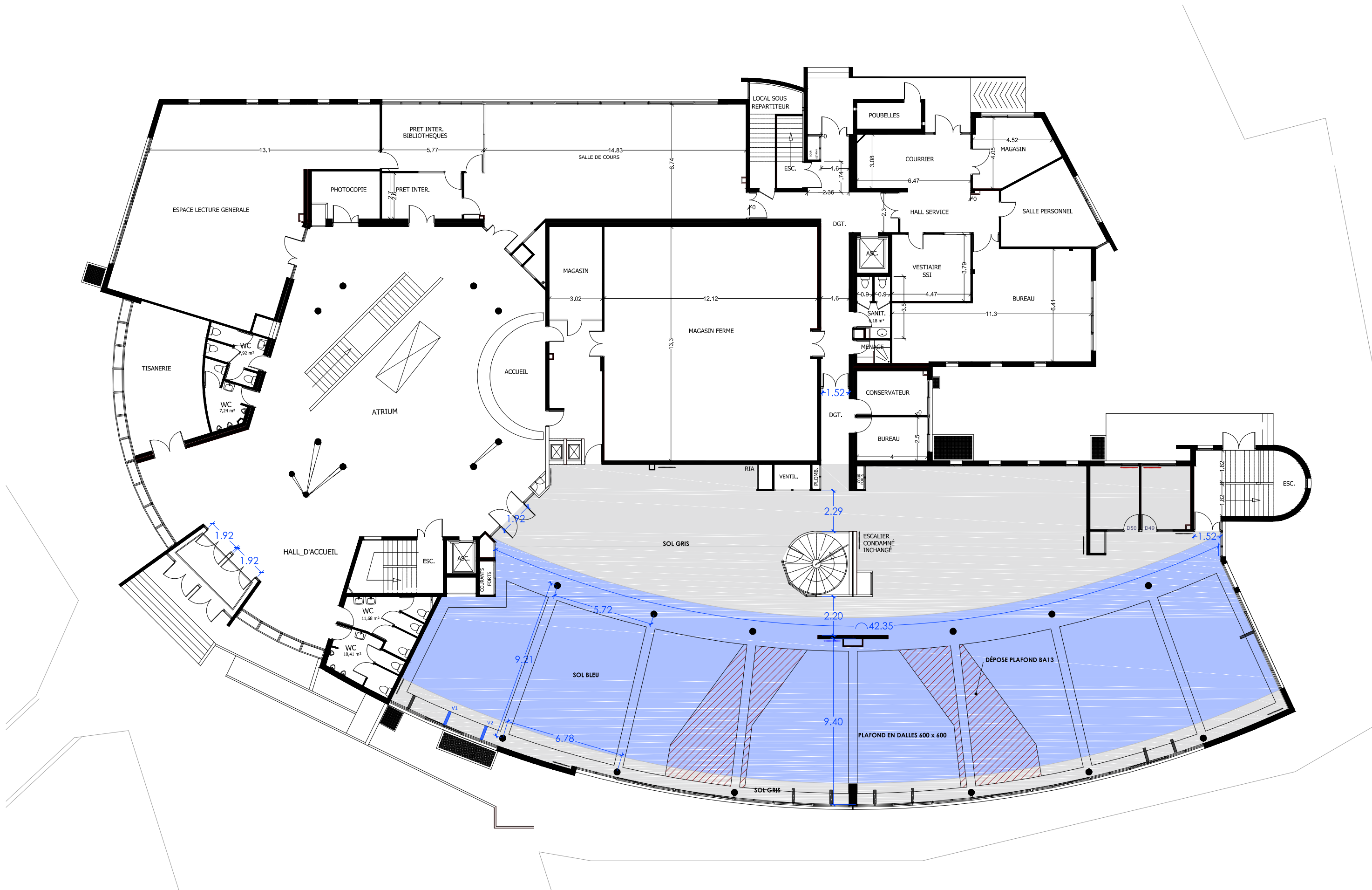
A - le 30/10/2025

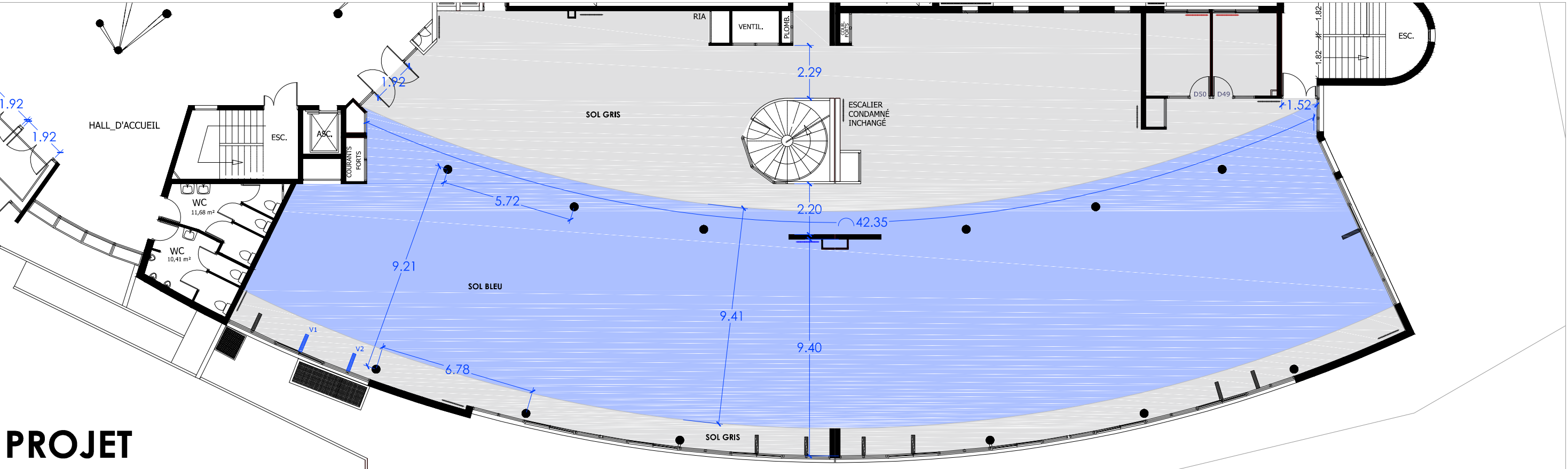
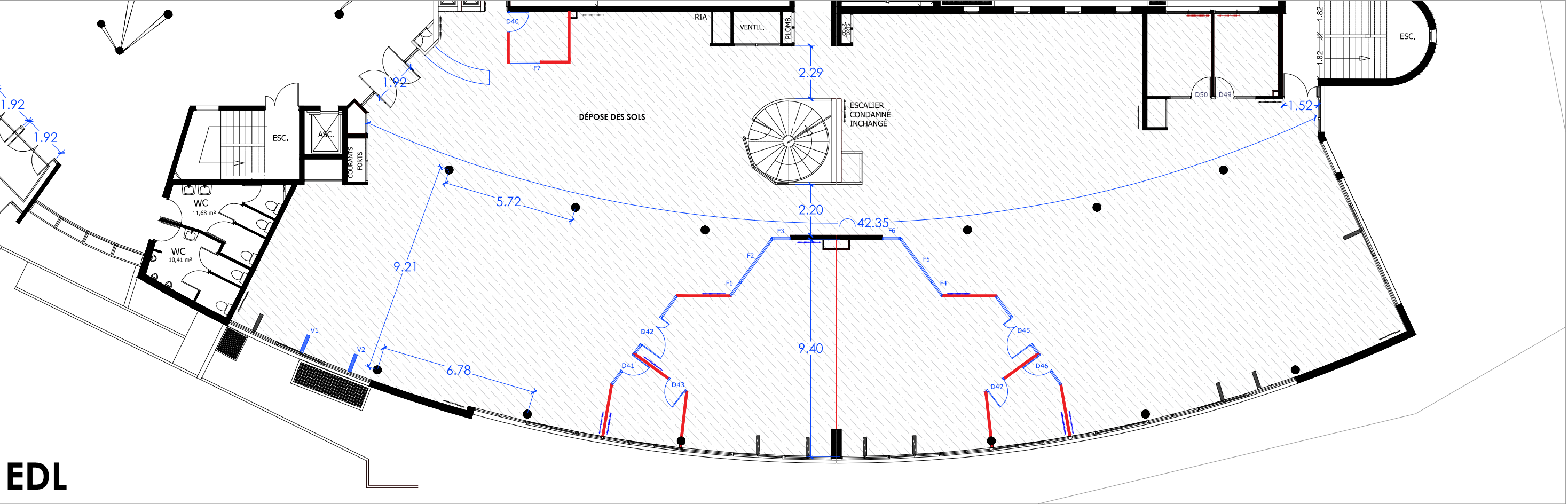


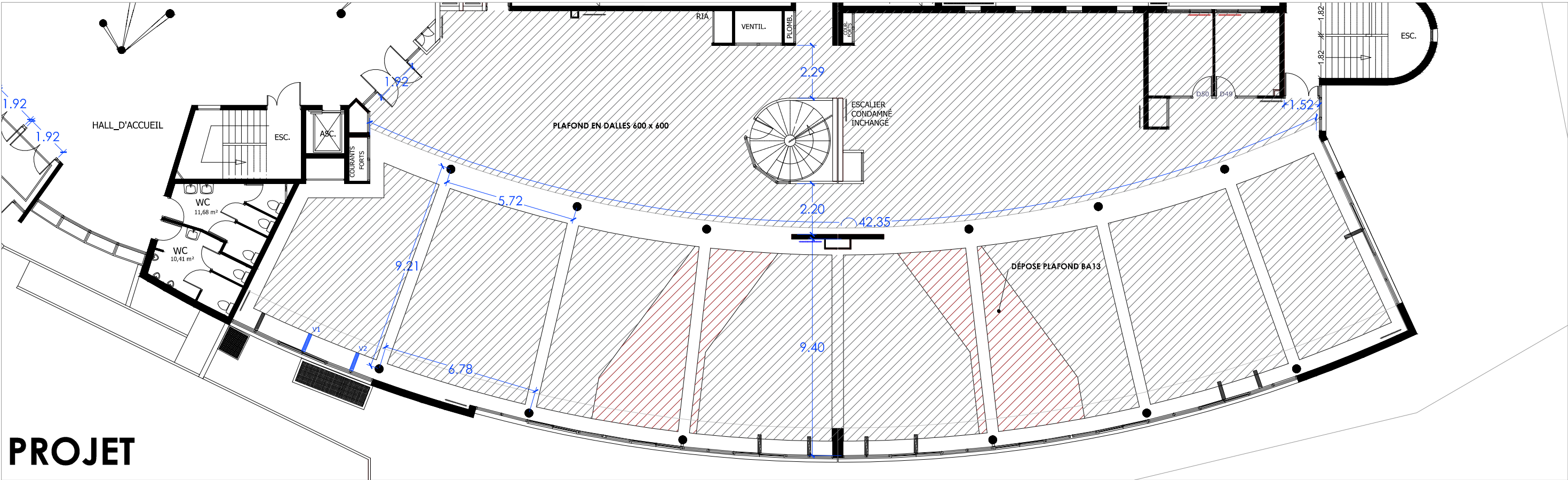
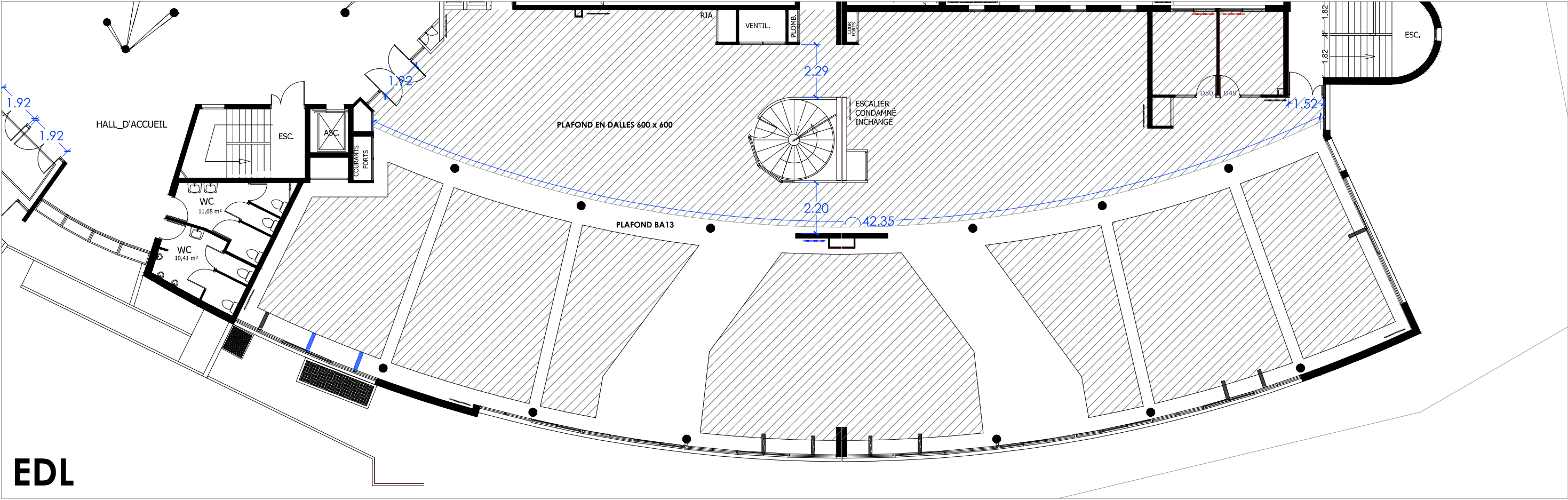




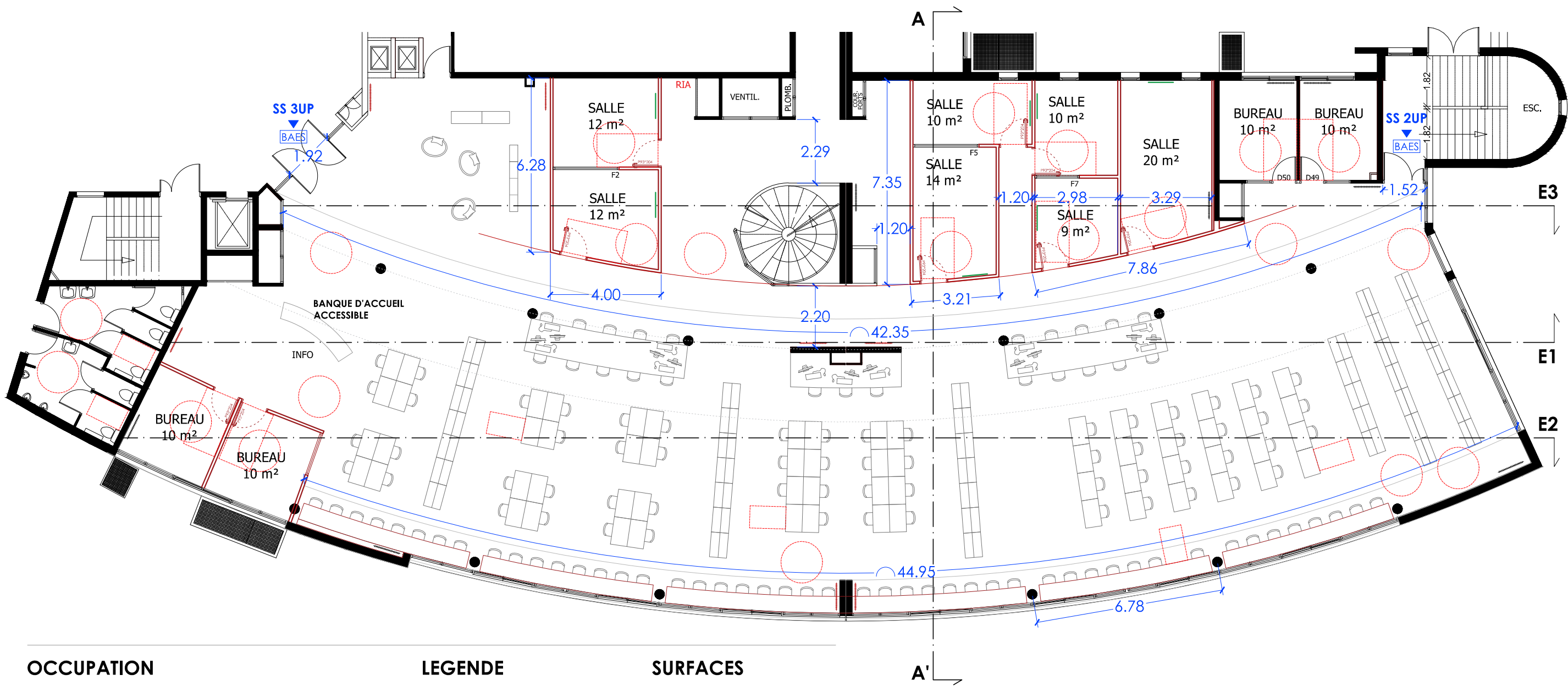
INCHANGÉ
RÉEMPLOI
DÉMOLITION







ÉLÉVATION salle



OCCUPATION

Salles et bureaux : 38 p
Espace ouvert : 135 p
- comptoir 48 p
- travail 40 p (4) 24 p (seul)
- face à face 23 p

TOT 169p

LEGENDE

Existant —
Projet —
Chauffage —

SURFACES

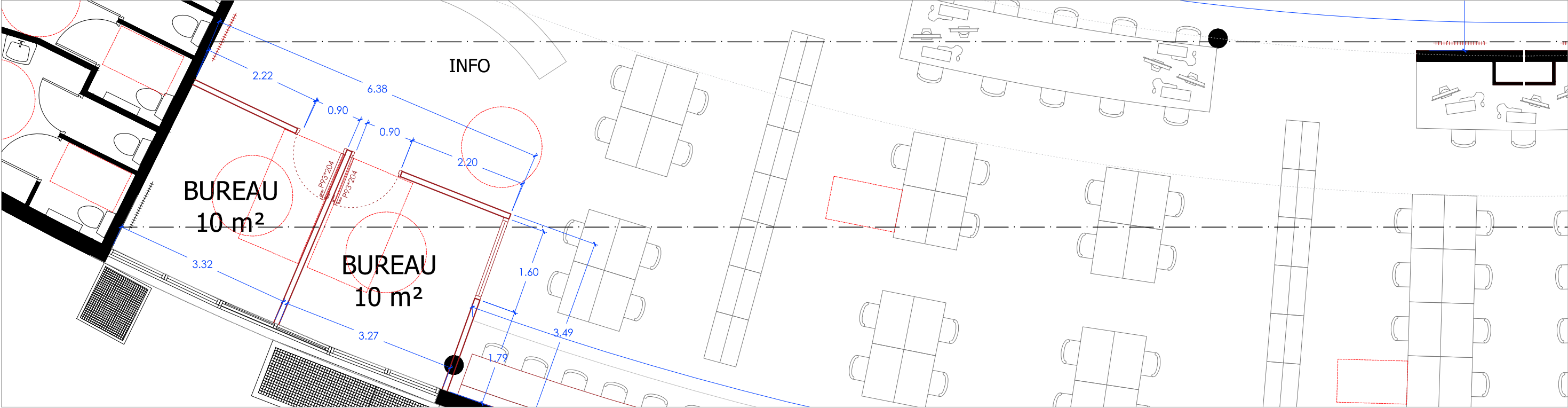
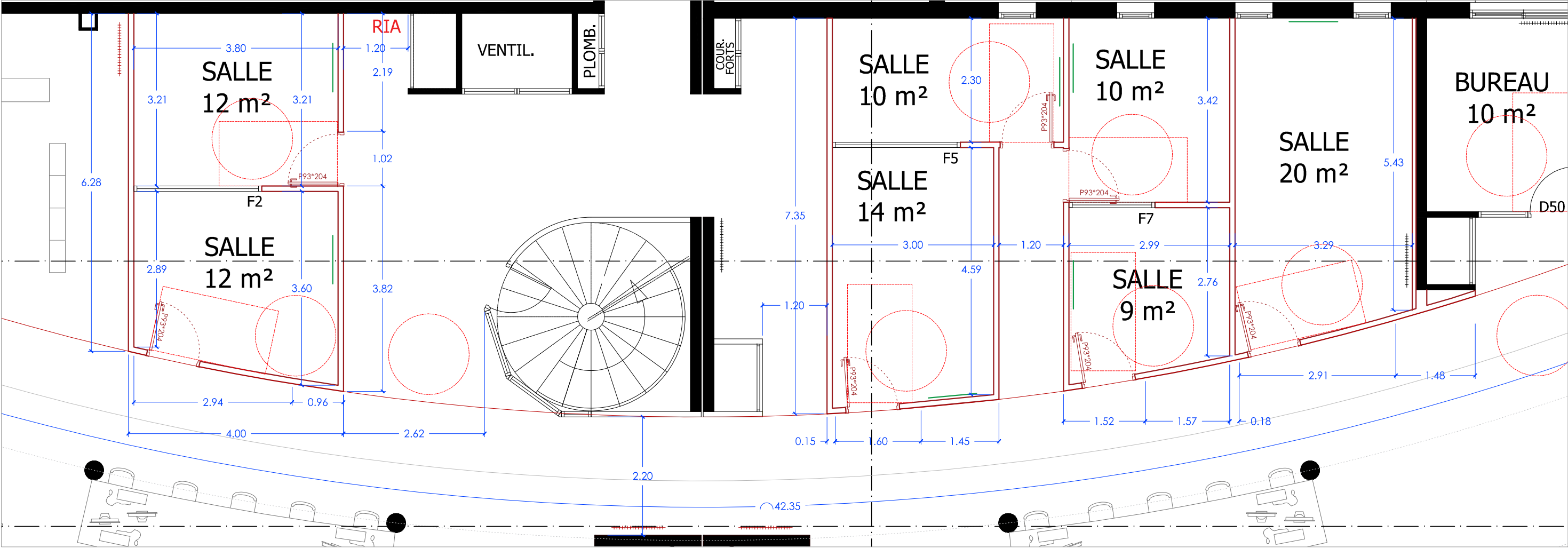
SALLES 130 m2
TOT 764 m2

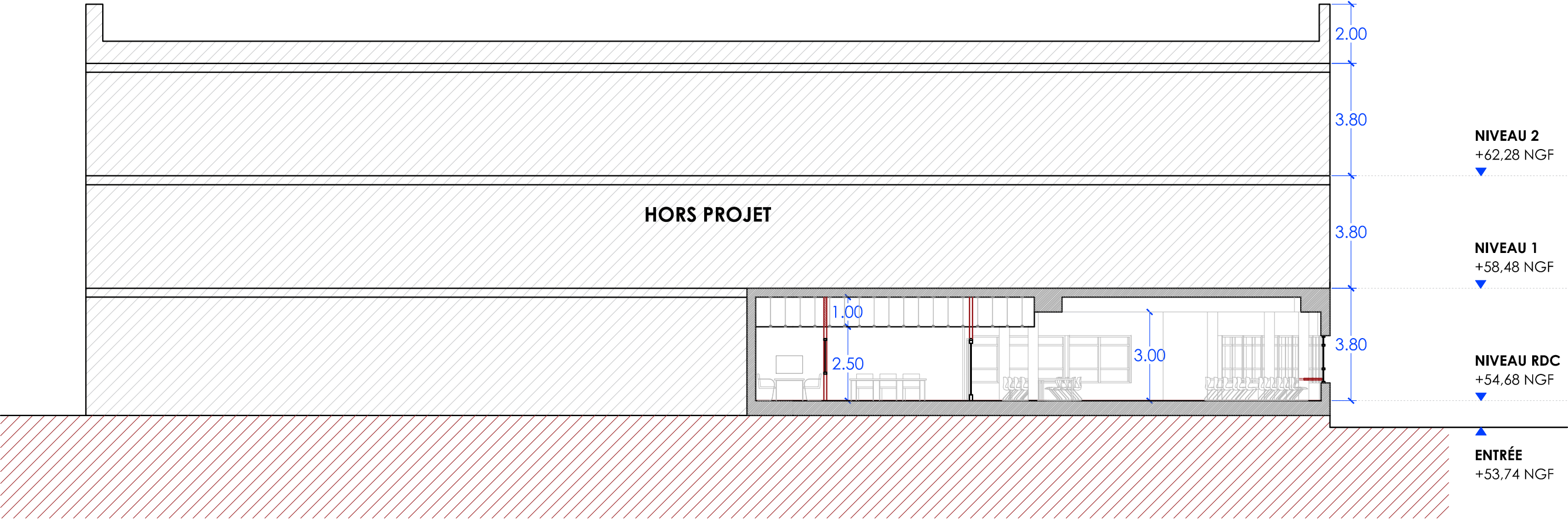
RÉAMÉNAGEMENT DU REZ-DE-CHAUSSÉE DE LA BU LSH
52 Av. Paul Alduy - 66 000 Perpignan

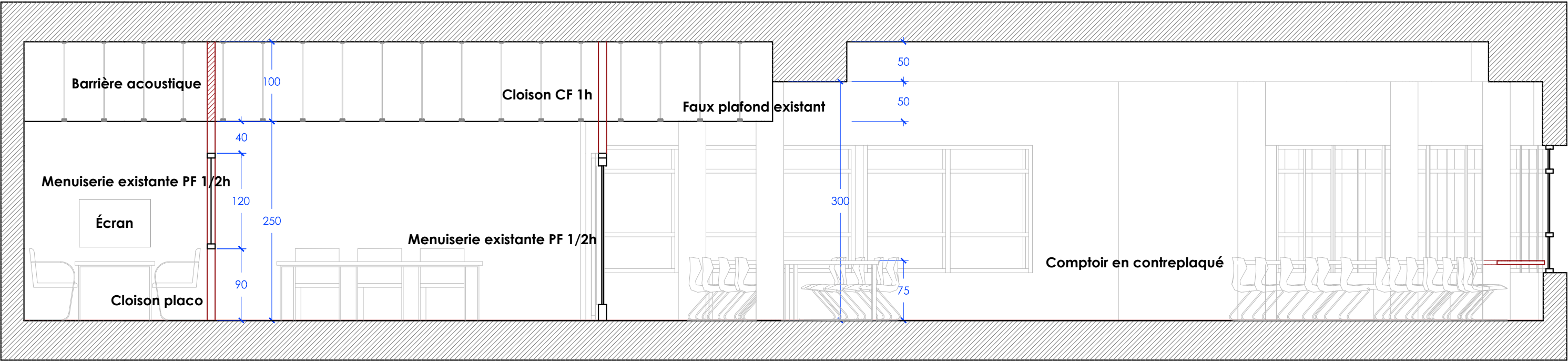
Plan RDC Projet 2
Echelle : 1:150

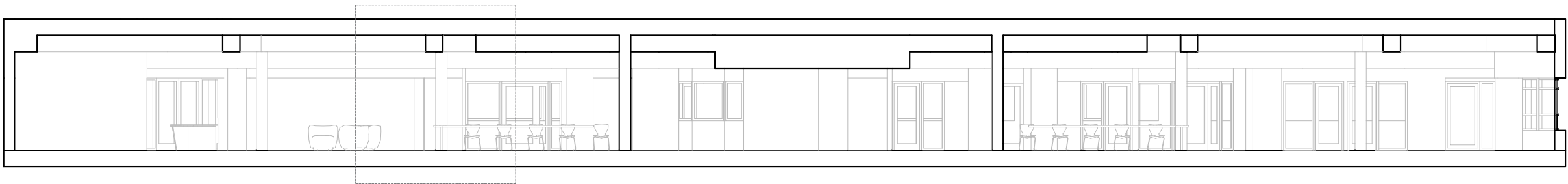
DCE
le 30/09/2025





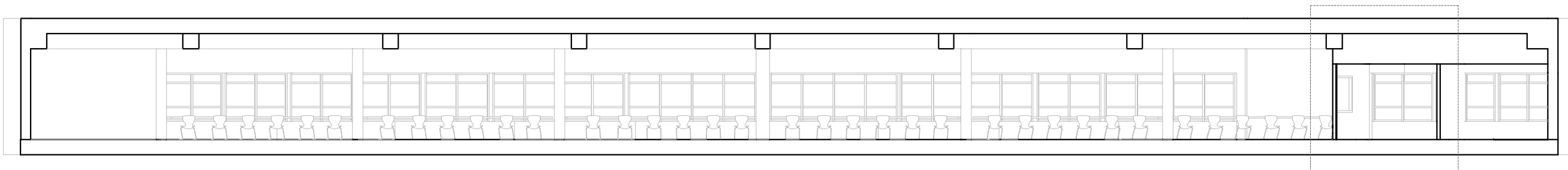






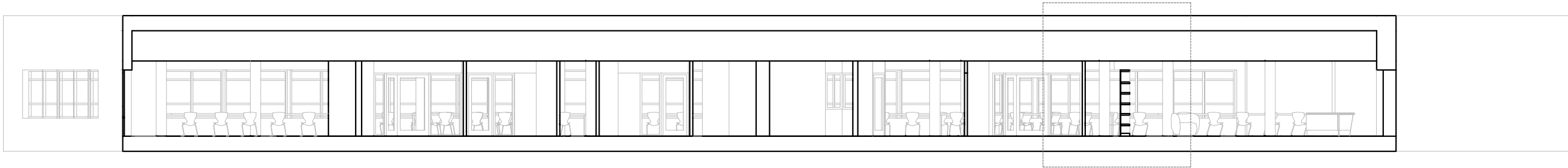
E1

Z1



E2

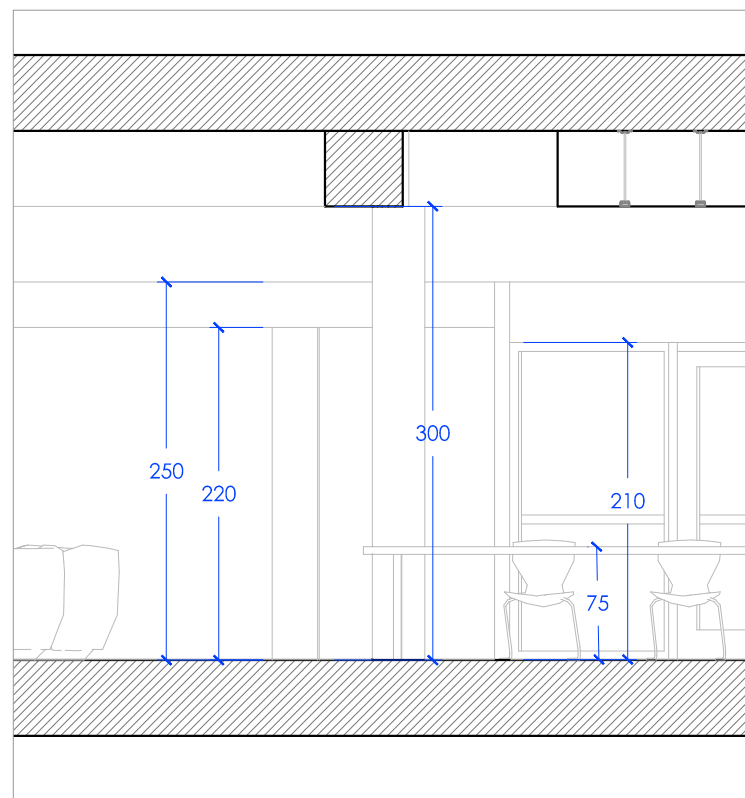
Z2



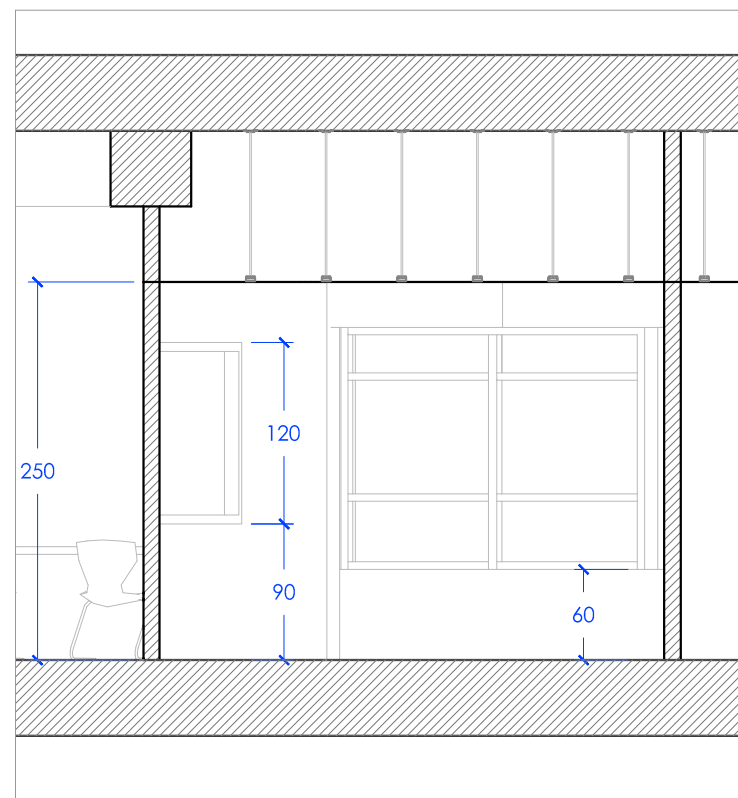
E3

Z3

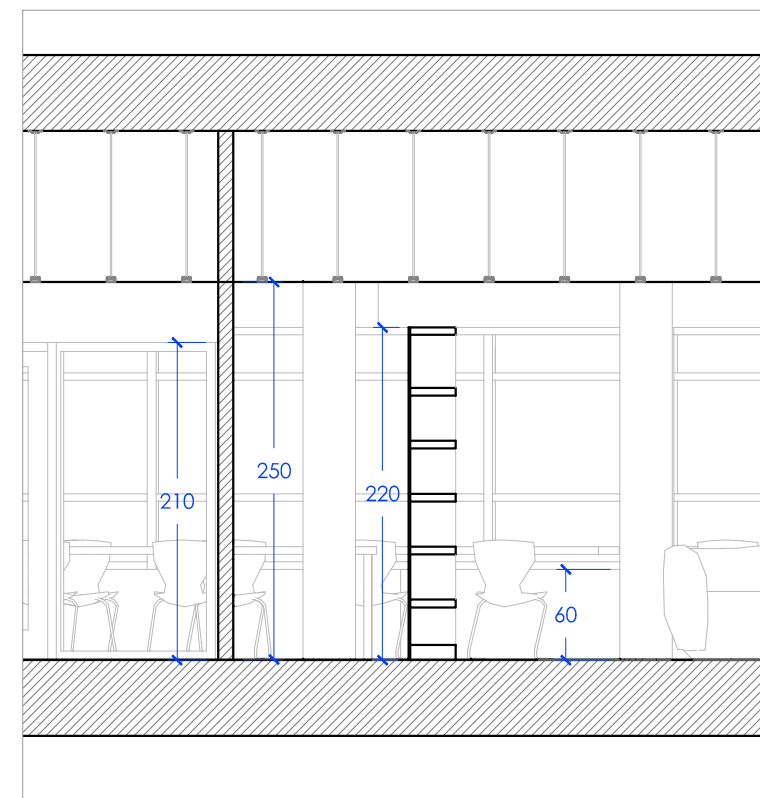




Z1

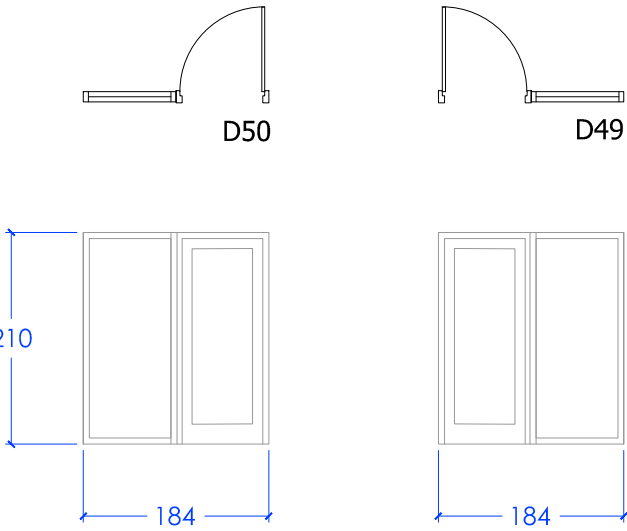


Z2

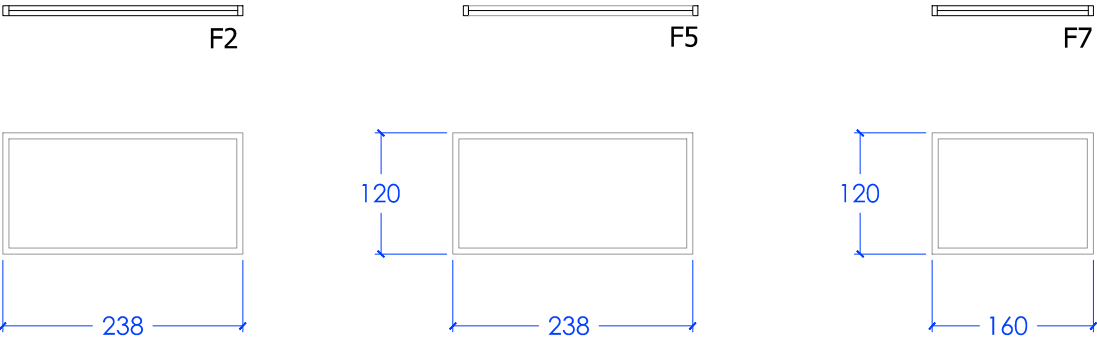


Z3

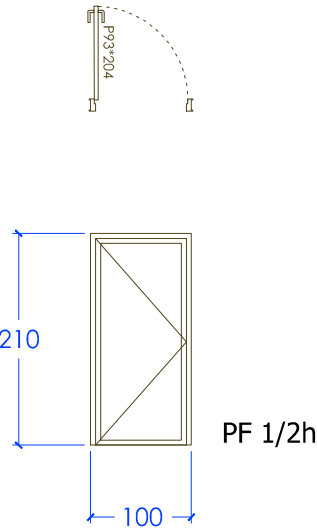
Portes conservées



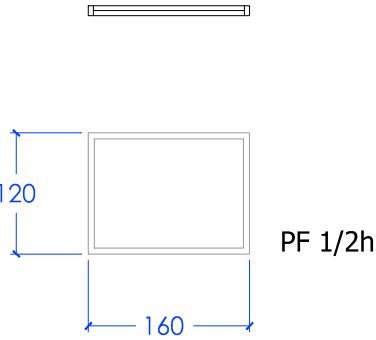
Menuiseries en réemploi

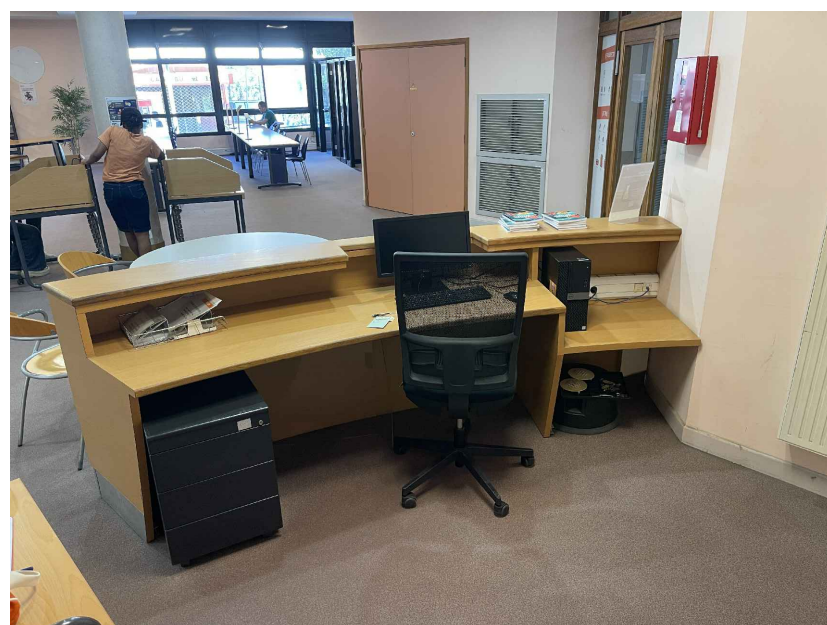
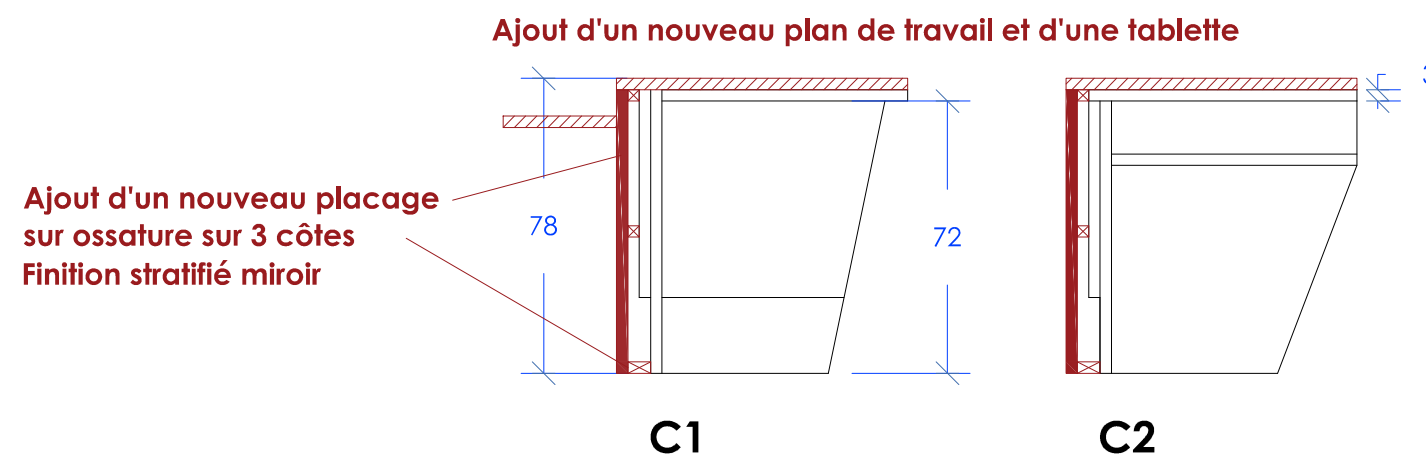
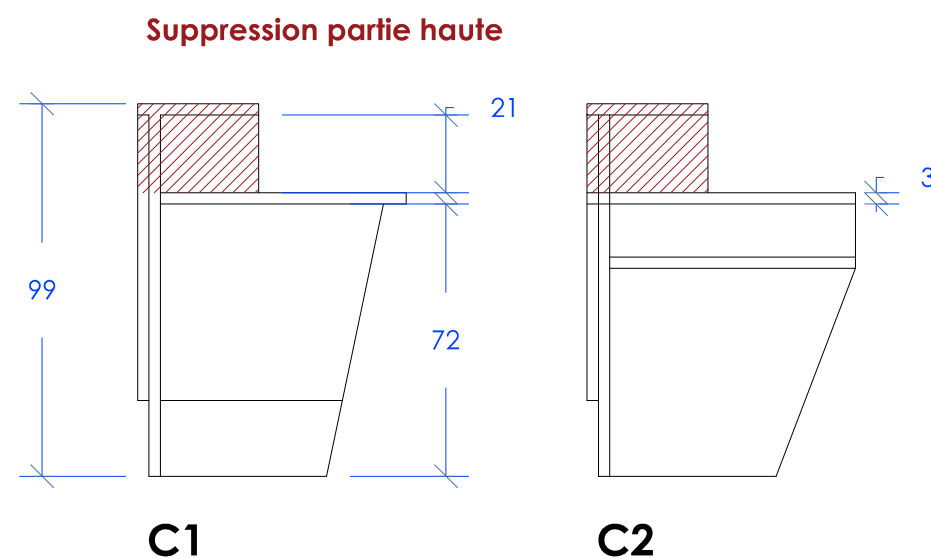
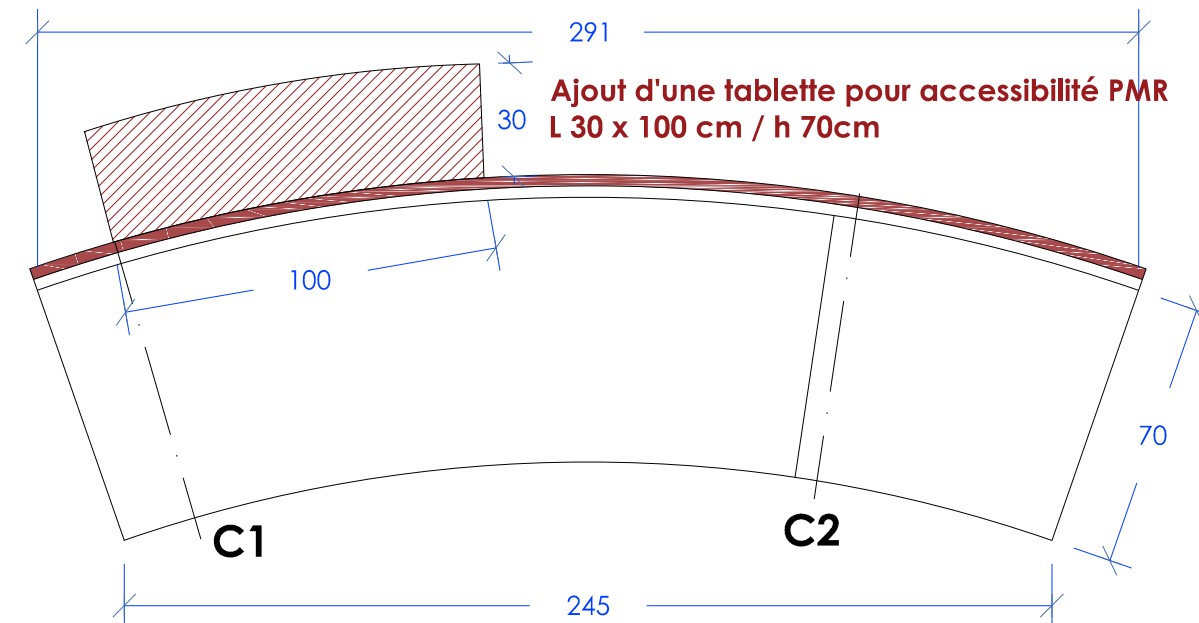
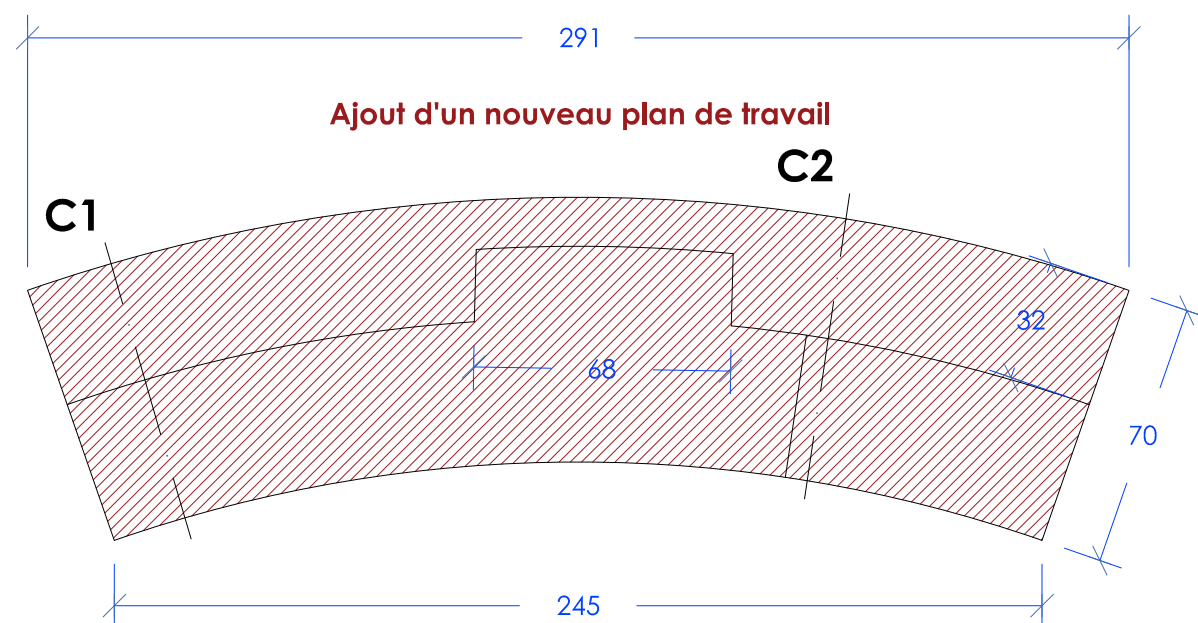


Portes neuves



Menuiseries neuves





Photos de la banque existante









